

**Paper Reference(s)    1SC0/2PF**  
**Pearson Edexcel Level 1/Level 2 GCSE**  
**(9–1)**

**Combined Science**  
**PAPER 6**  
**Foundation Tier**

**Friday 16 June 2023 – Morning**

**Diagram Booklet**

**In the boxes below, write your name, centre number and candidate number.**

<b>Surname</b>					
<b>Other names</b>					
<b>Centre Number</b>					
<b>Candidate Number</b>					

## **INSTRUCTIONS**

**There may be spare copies of some diagrams in case you need them.**

**THIS DIAGRAM BOOKLET MUST BE  
RETURNED WITH THE QUESTION PAPER  
AT THE END OF THE EXAMINATION.**

# **Contents**

## **Page**

<b>5–6</b>	<b>Question 1(a)</b>
<b>7</b>	<b>Question 1(b)</b>
<b>8</b>	<b>Question 2(a)</b>
<b>9</b>	<b>Question 2(b)</b>
<b>10</b>	<b>Question 2(b)(ii)</b>
<b>11</b>	<b>Question 3 – not to scale</b>
<b>12</b>	<b>Question 3(c)</b>
<b>13</b>	<b>Question 4</b>
<b>14</b>	<b>Question 4(d)</b>
<b>15</b>	<b>Question 4(d)(ii)</b>
<b>16</b>	<b>Question 5(b)</b>
<b>17</b>	<b>Question 5(c)(ii)</b>
<b>18</b>	<b>Question 6(d)</b>

**(continued on the next page)**

## **Contents continued.**

### **Spare Copies**

**19 Question 1(a)**

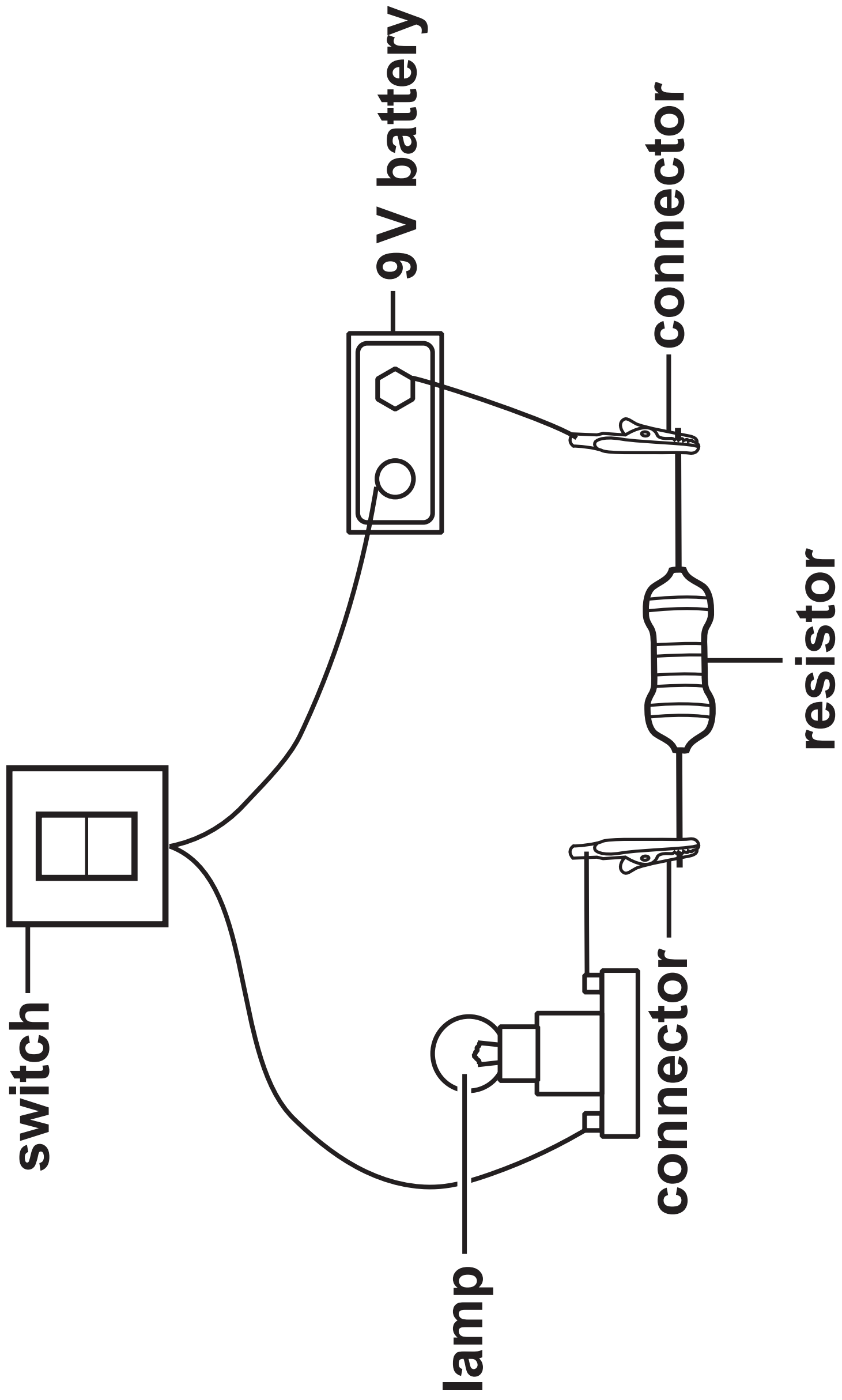
**20 Question 2(a)**

**21 Question 4(d)**

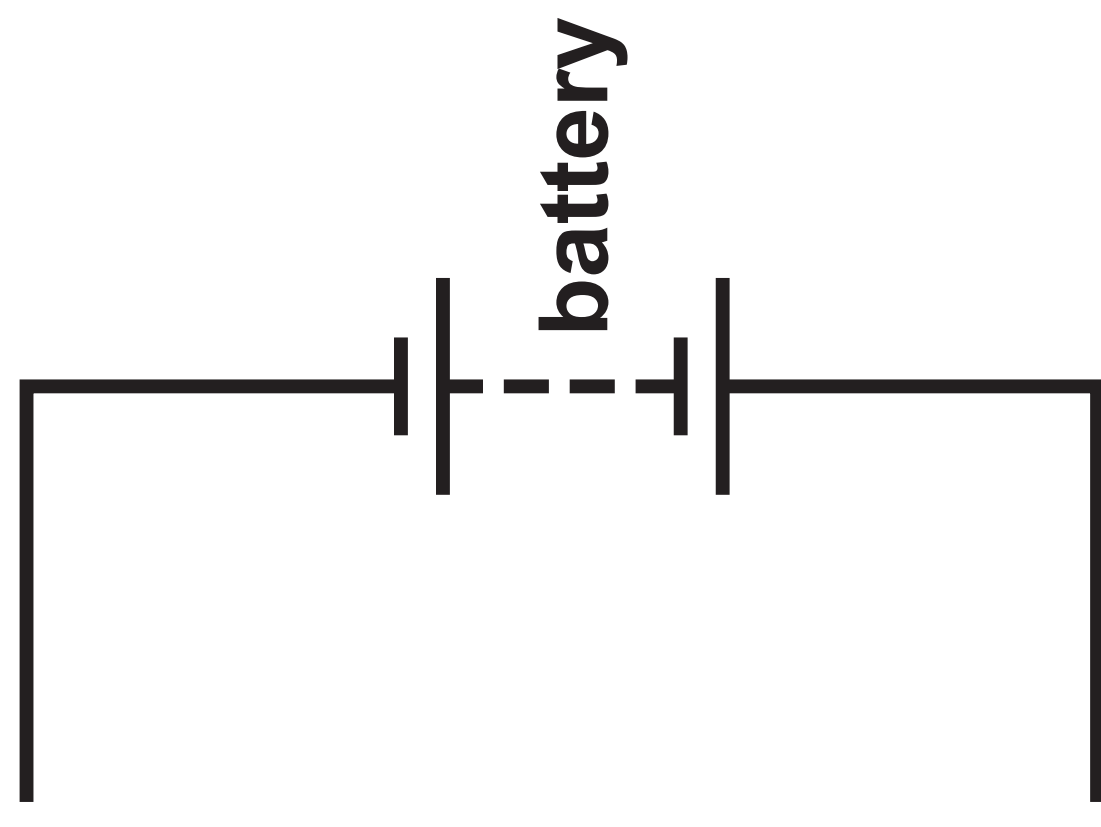
**22 Question 5(b)**

**23 Question 5(c)(ii)**

FIGURE 1

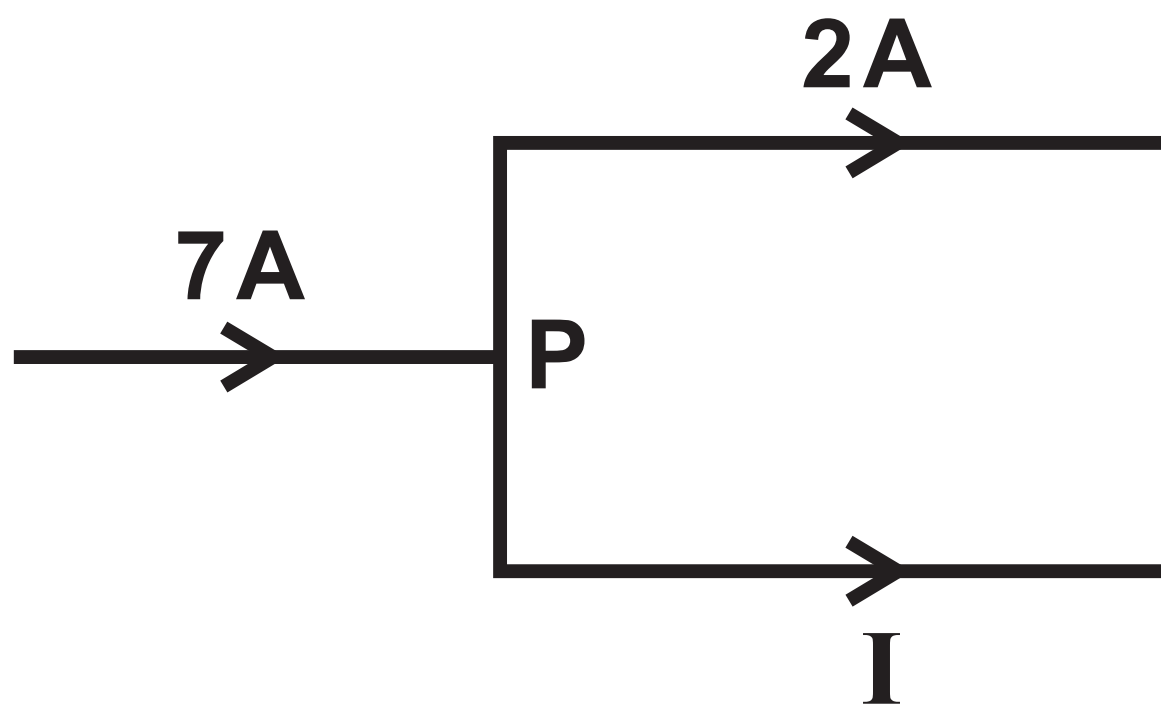


(continued on the next page)



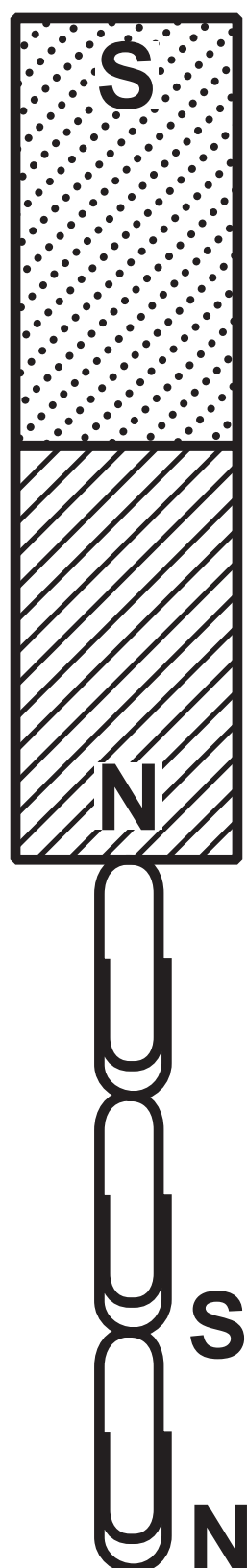
## Question 1(b)

FIGURE 2



## Question 2(a)

**FIGURE 3**

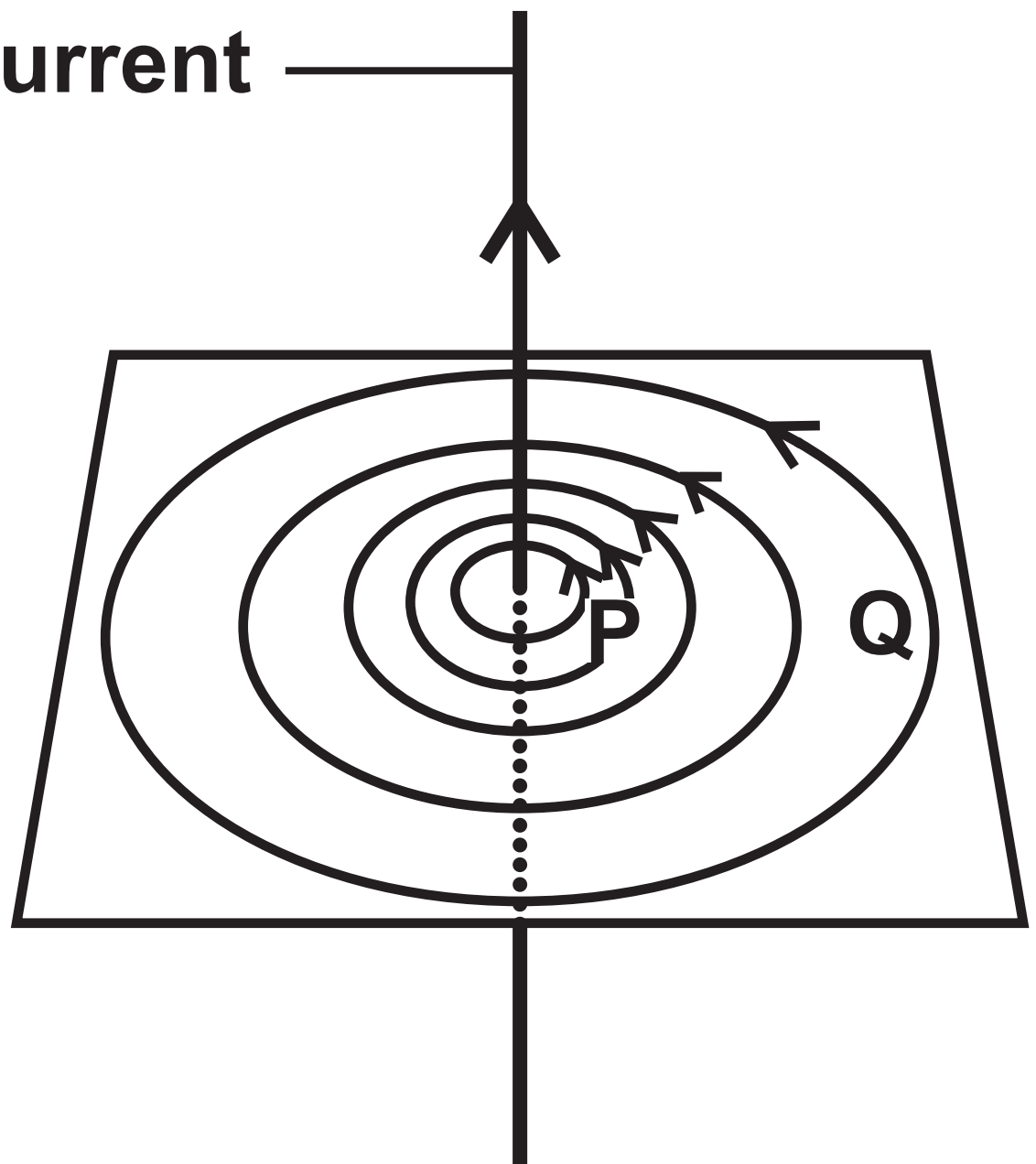




## Question 2(b)

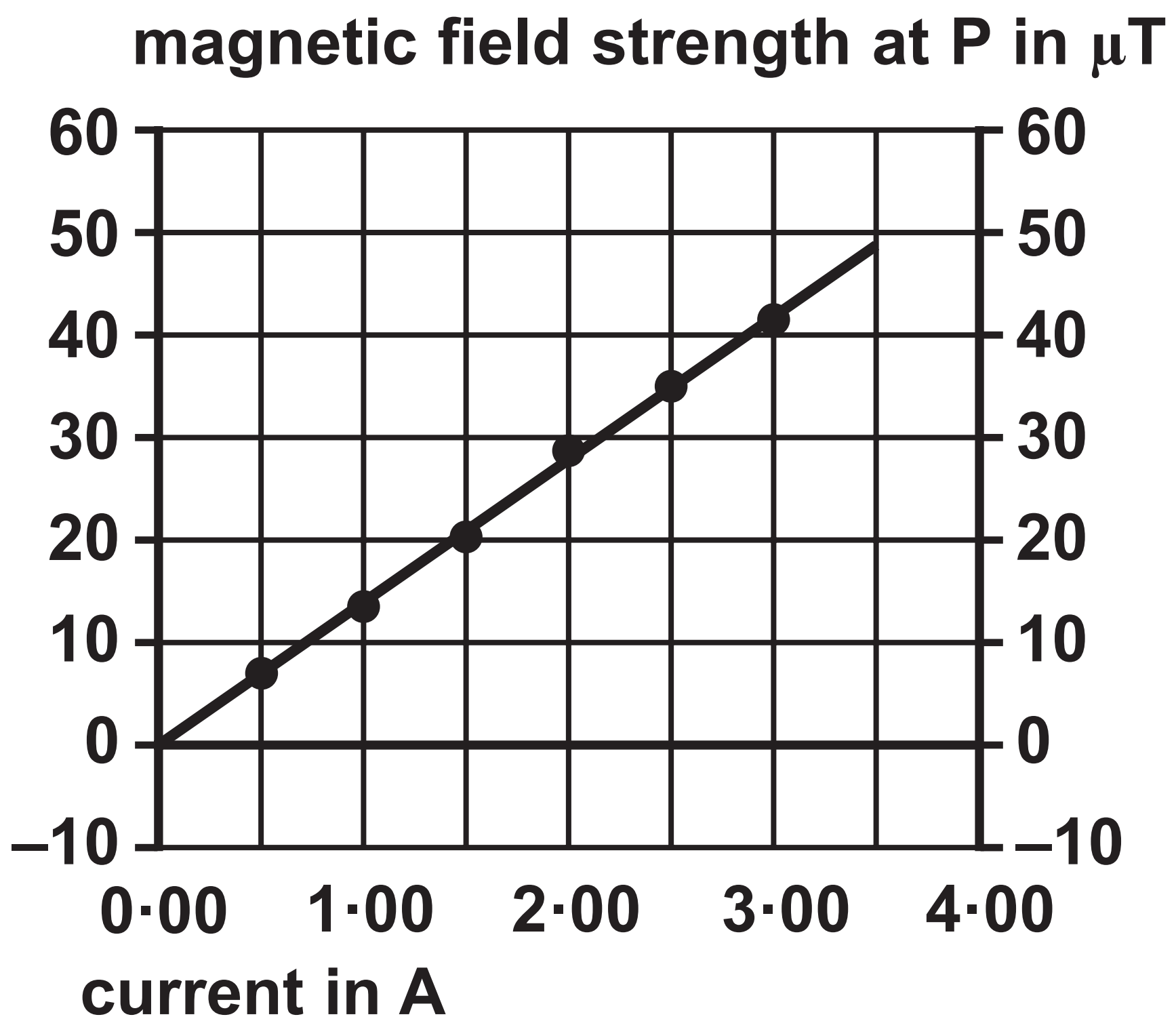
**FIGURE 4**

**wire carrying a current**



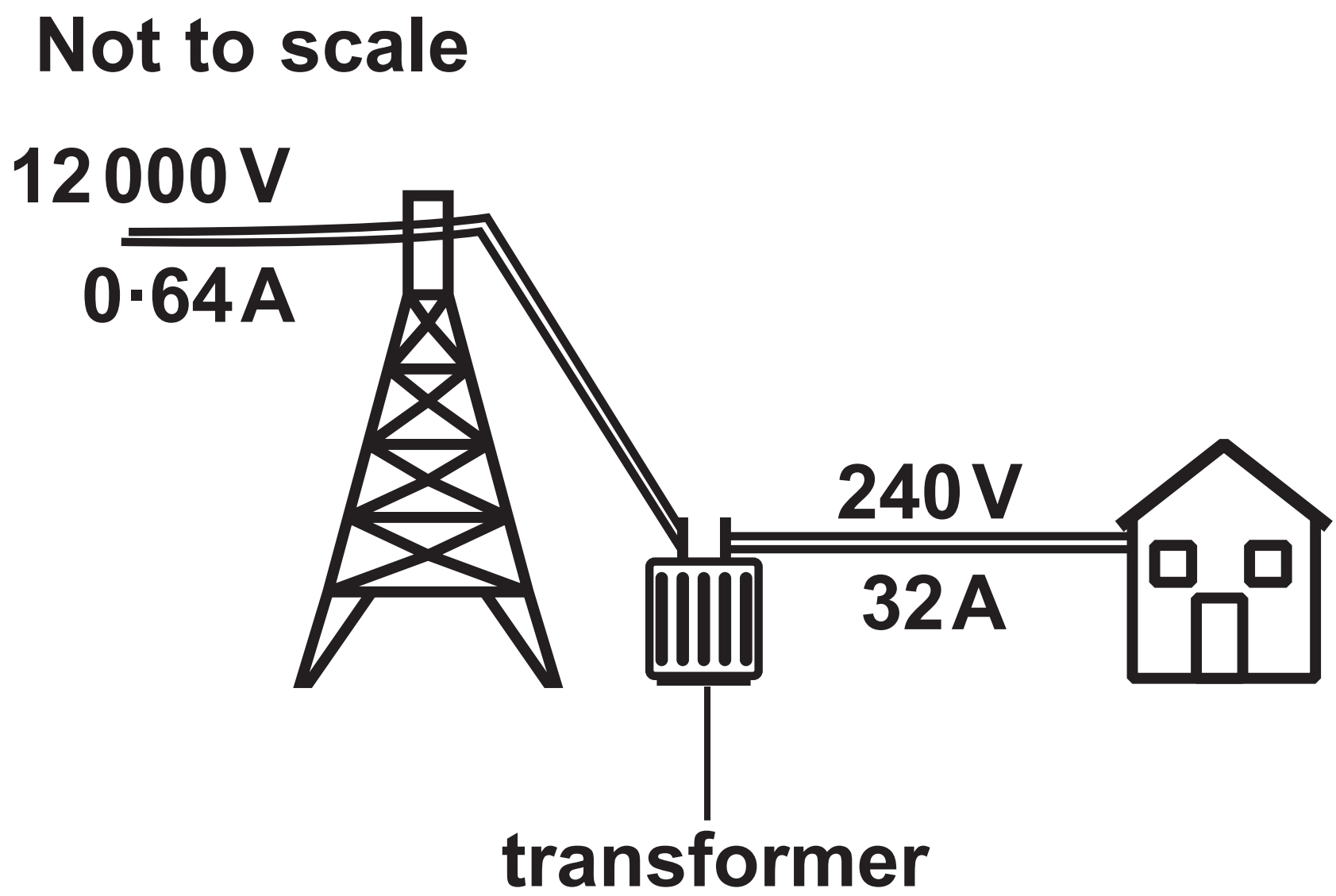
## Question 2(b)(ii)

FIGURE 5



## Question 3

FIGURE 6



## Question 3(c)

12

**FIGURE 7**

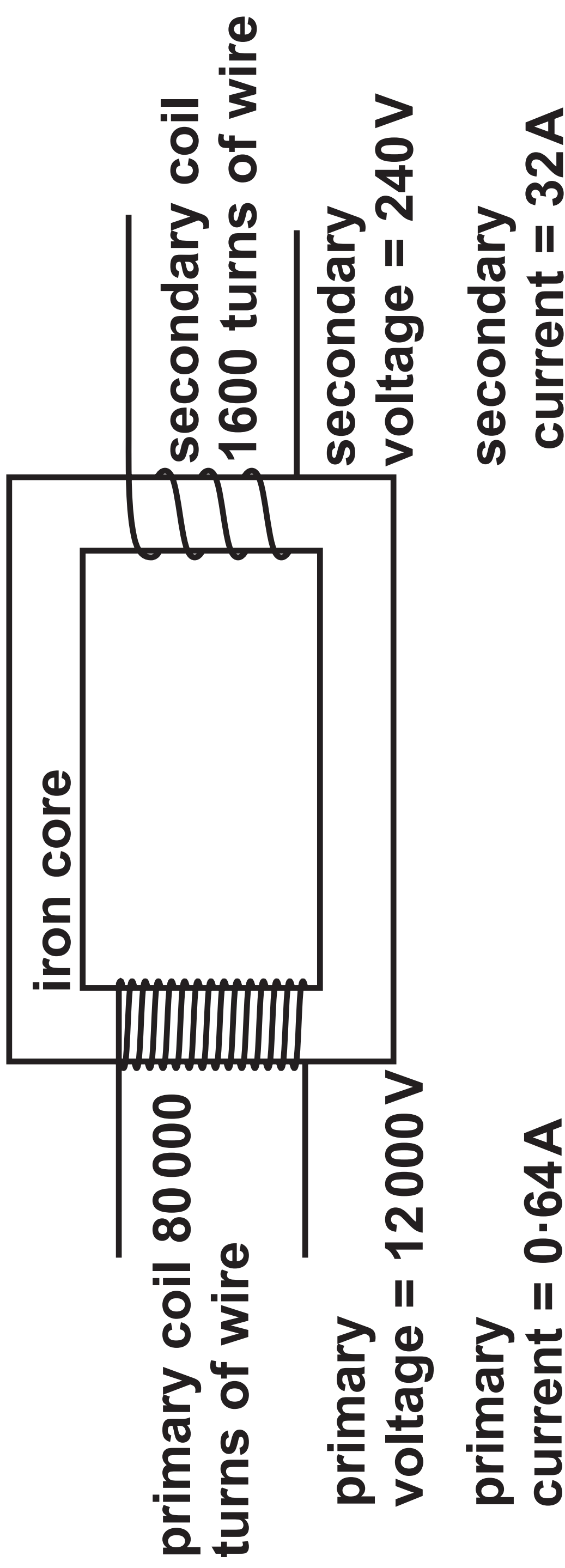
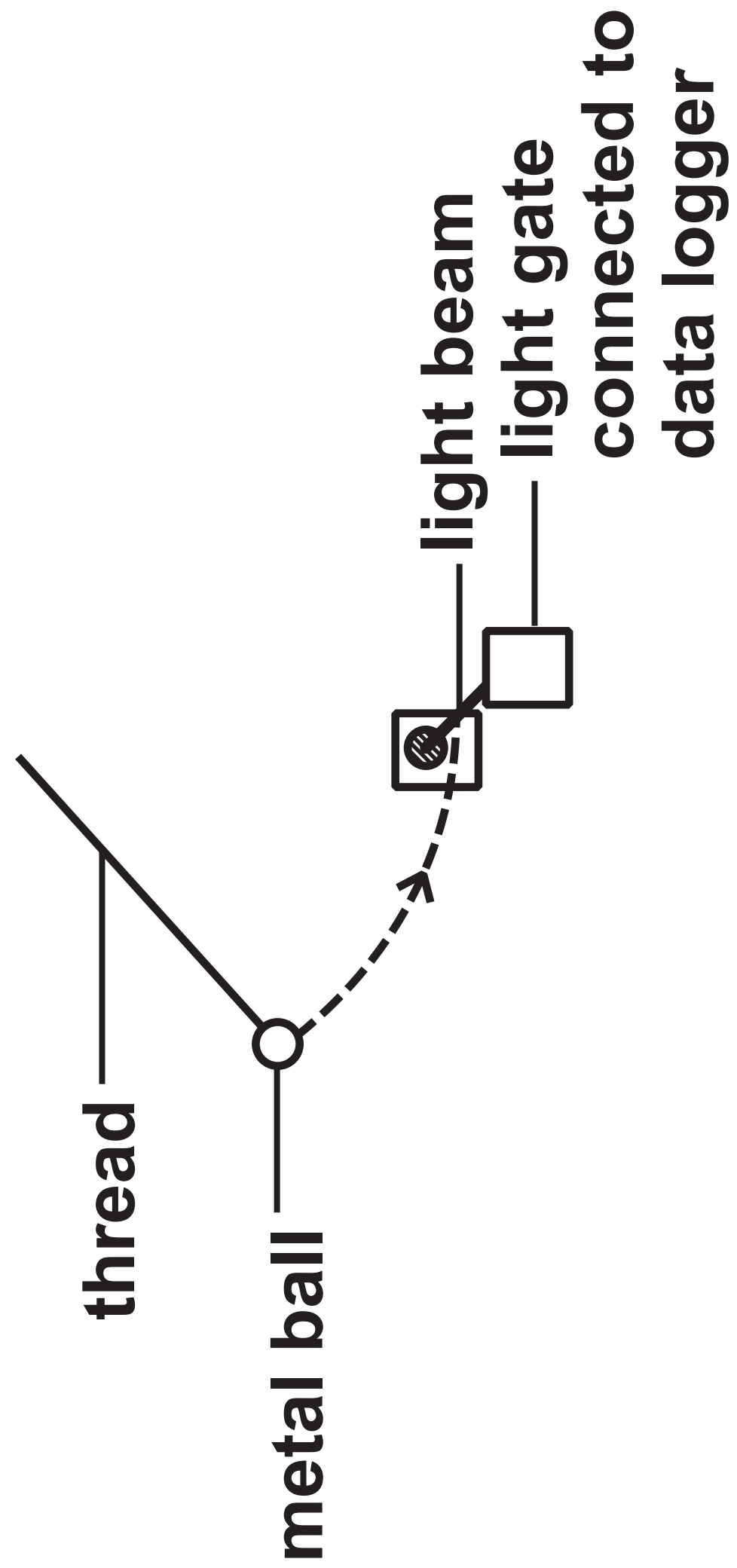
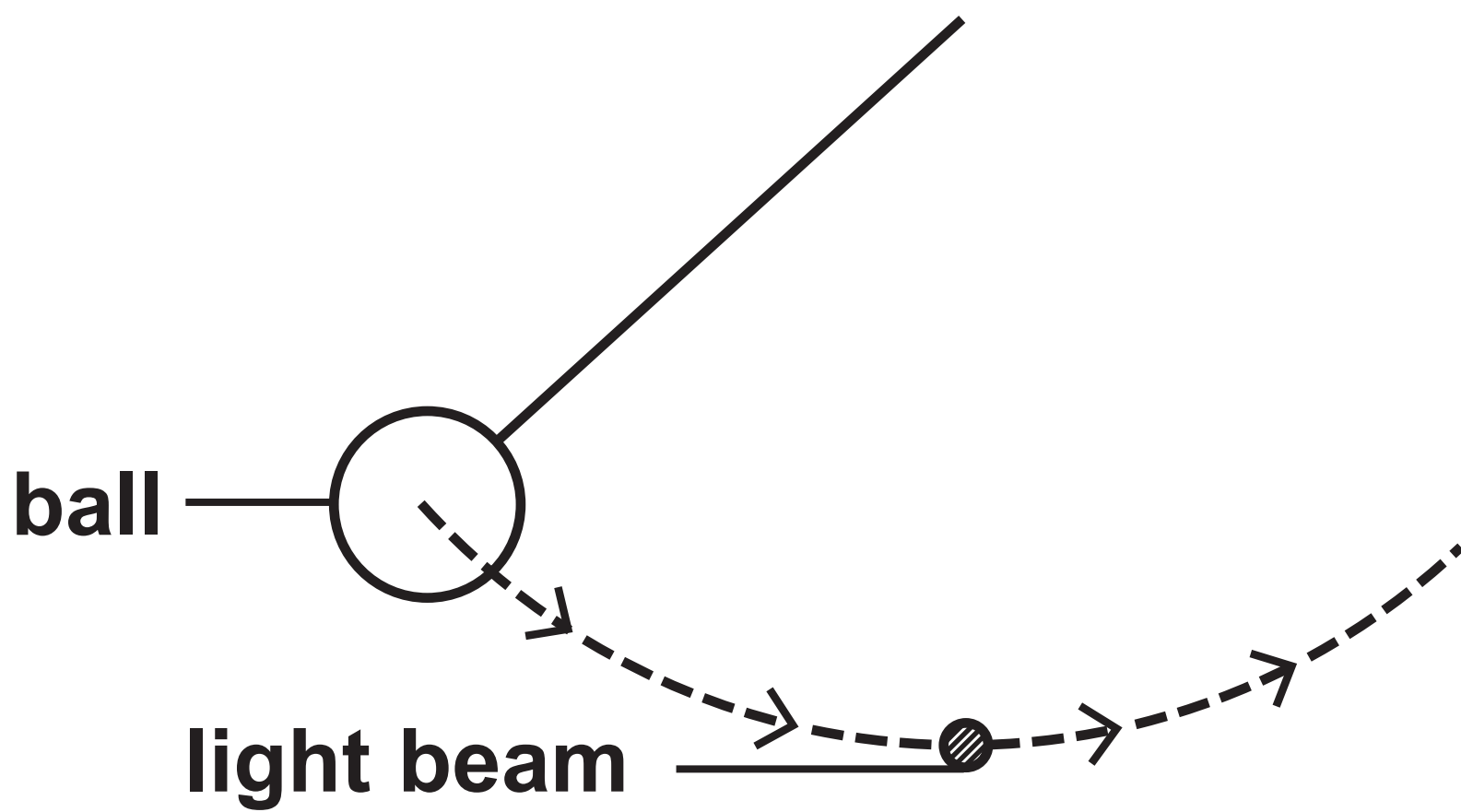


FIGURE 8



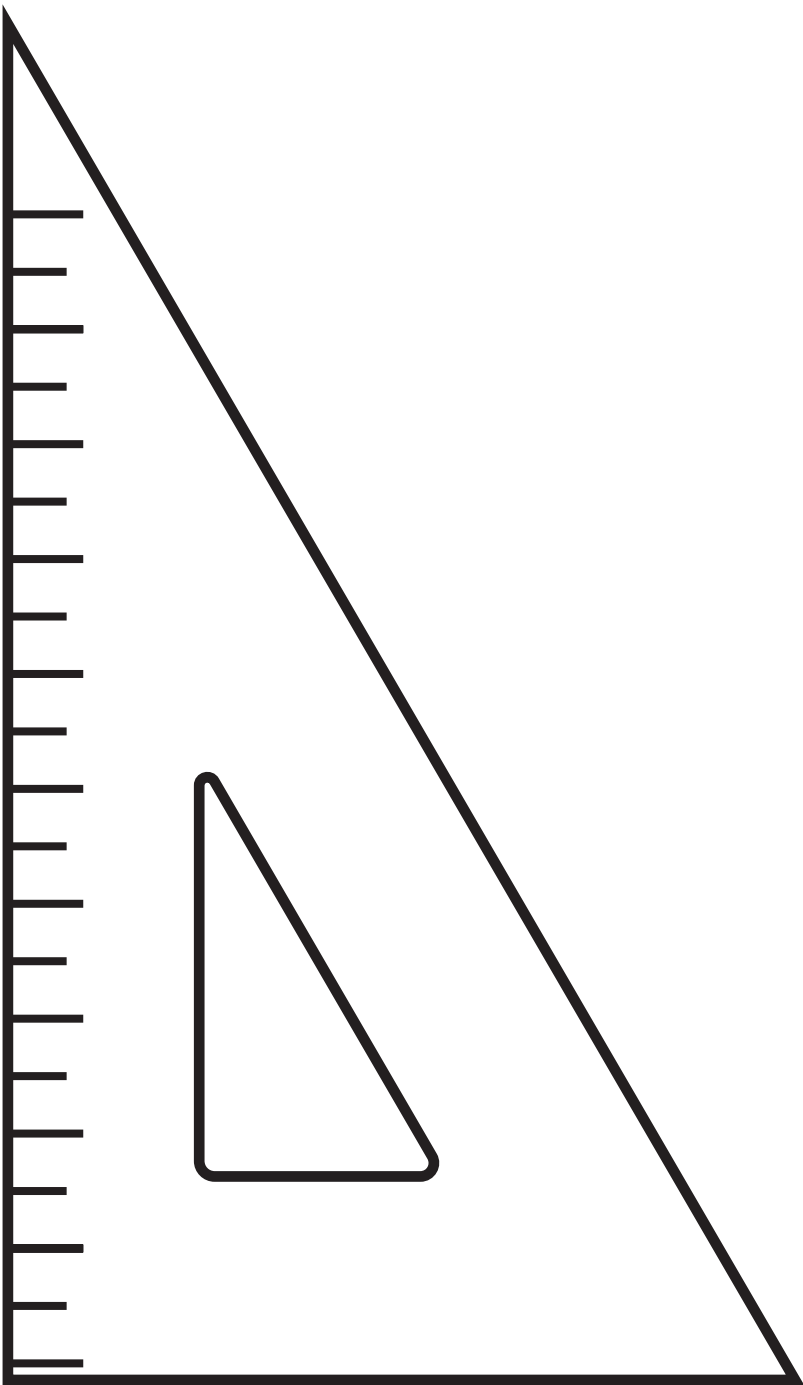
## Question 4(d)

**FIGURE 10**



Question 4(d)(ii)

FIGURE 11



Question 5(b)

FIGURE 12

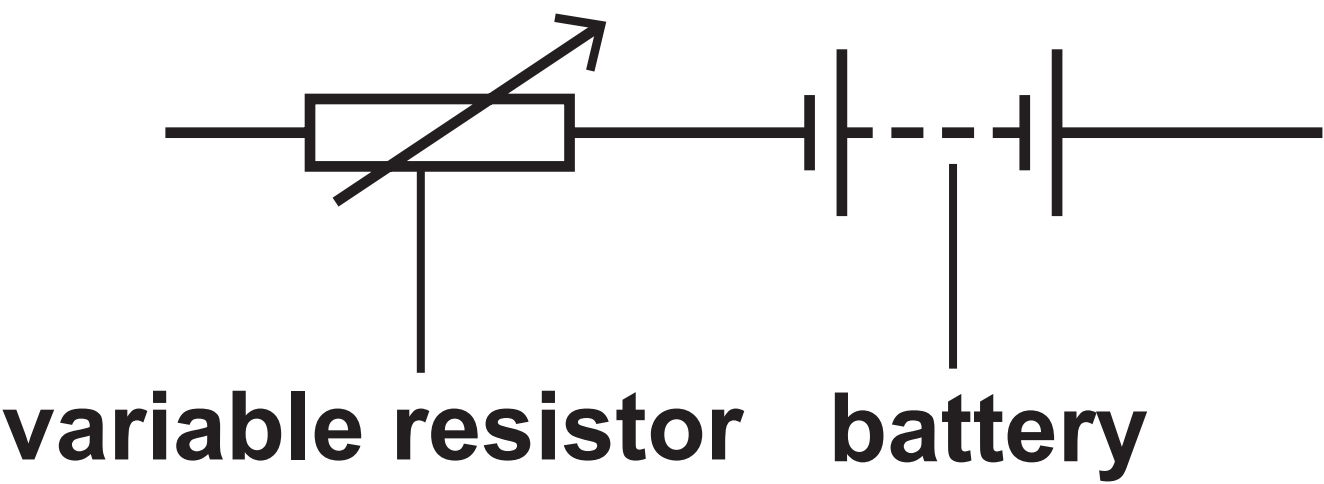
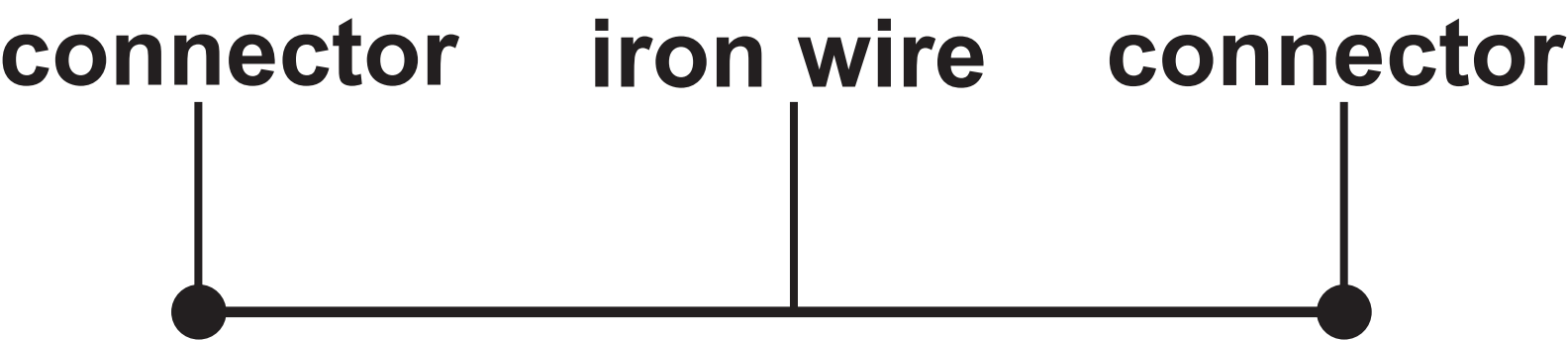
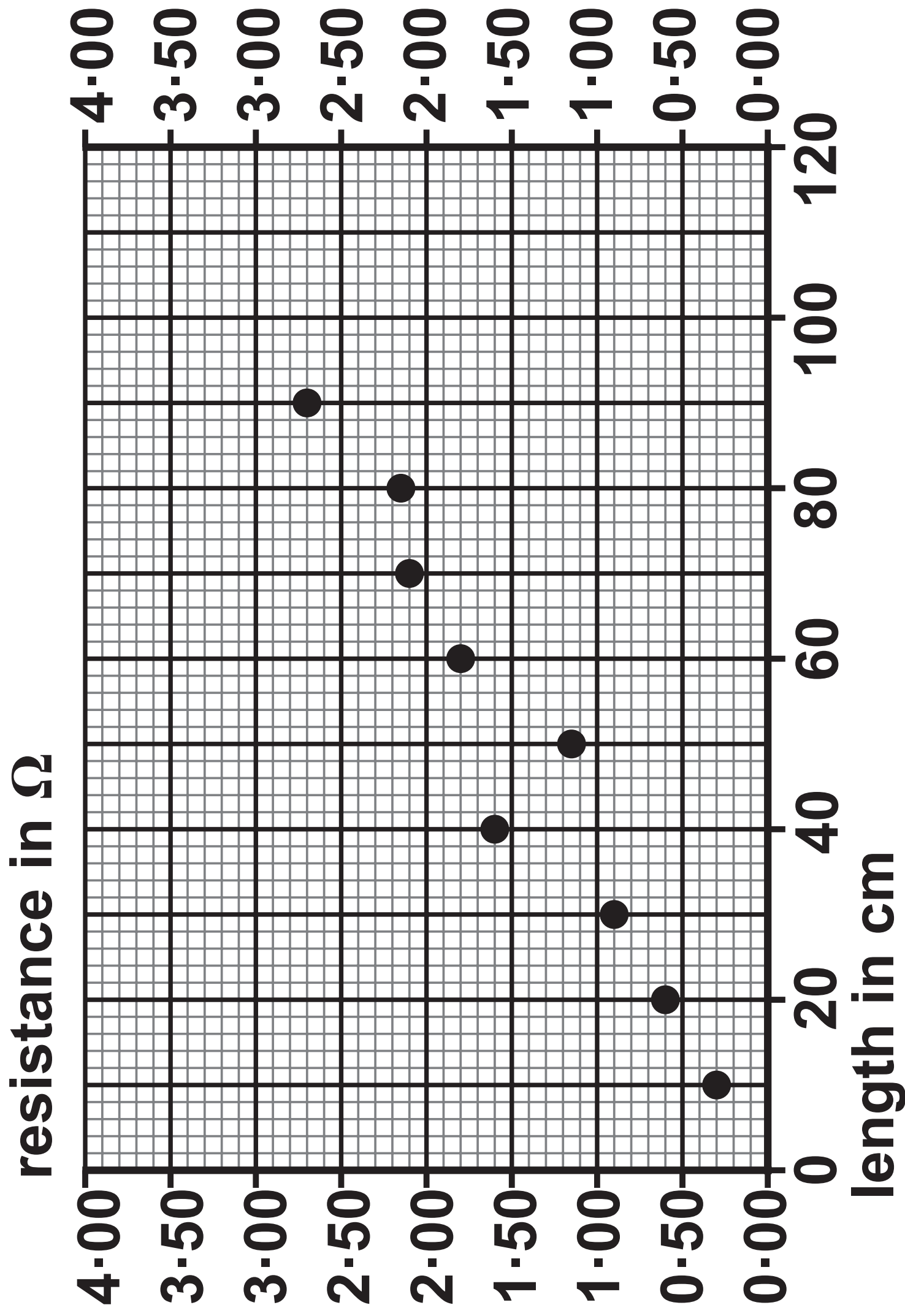


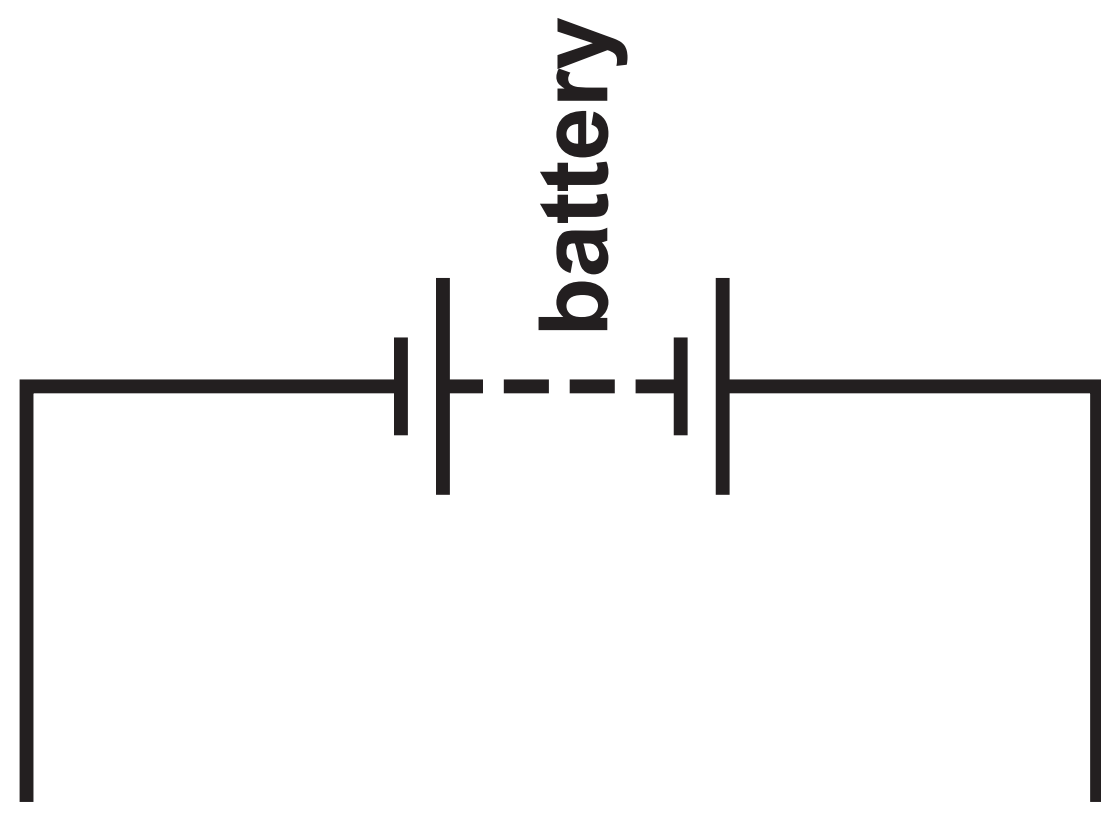


FIGURE 13



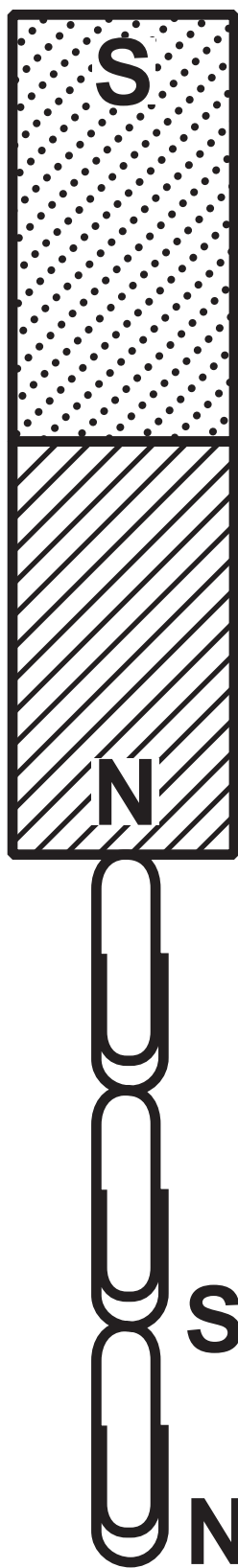
## Question 6(d)

<b>material</b>	<b>R-value</b>	<b>fire resistance</b>
<b>fibreglass, made from sand</b>	<b>R-3-3</b>	<b>non-flammable</b>
<b>polystyrene, made from petroleum oil</b>	<b>R-4-0</b>	<b>melts at 270 °C and spreads fire very quickly</b>



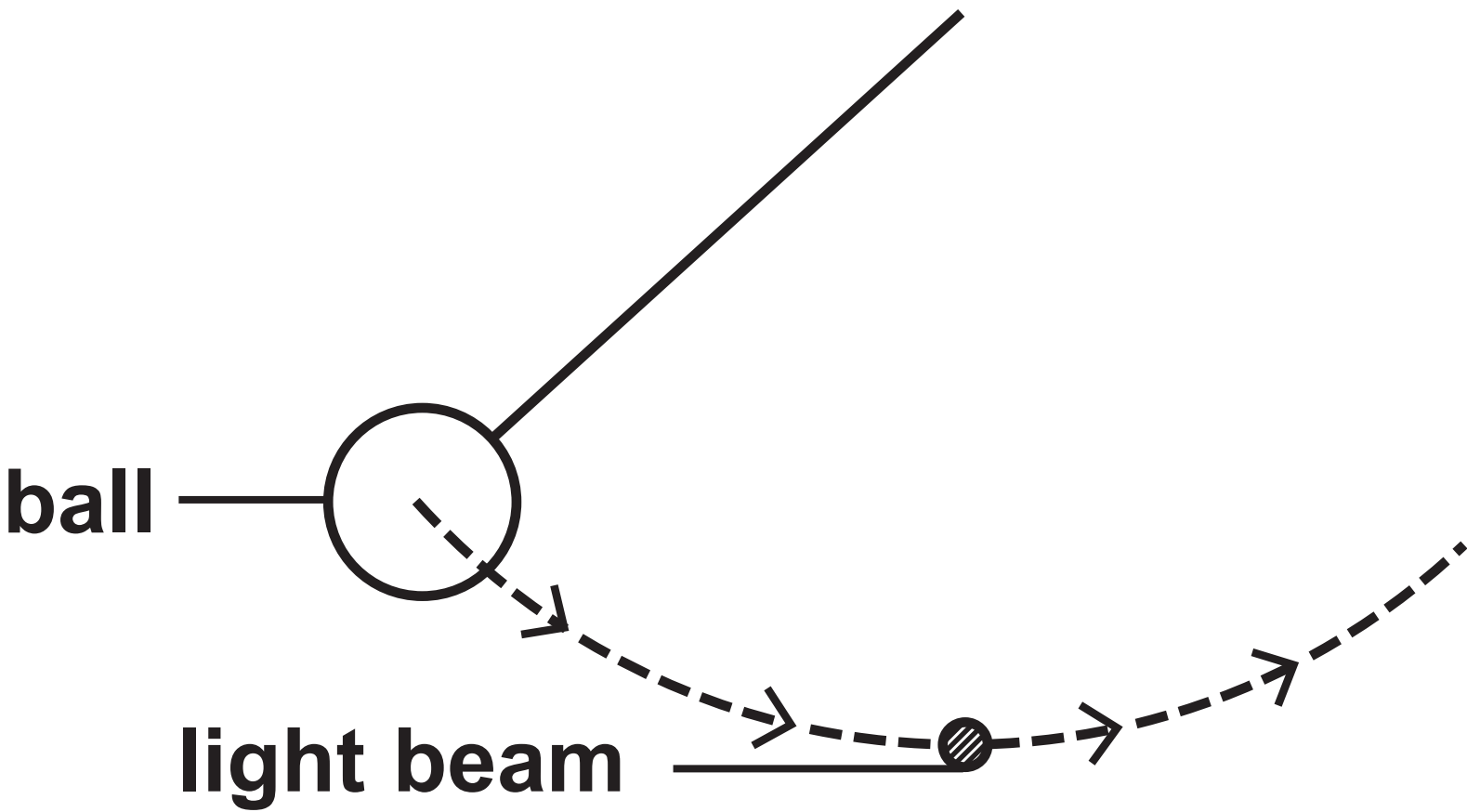
Question 2(a)

FIGURE 3



Question 4(d)

FIGURE 10



Question 5(b)

FIGURE 12

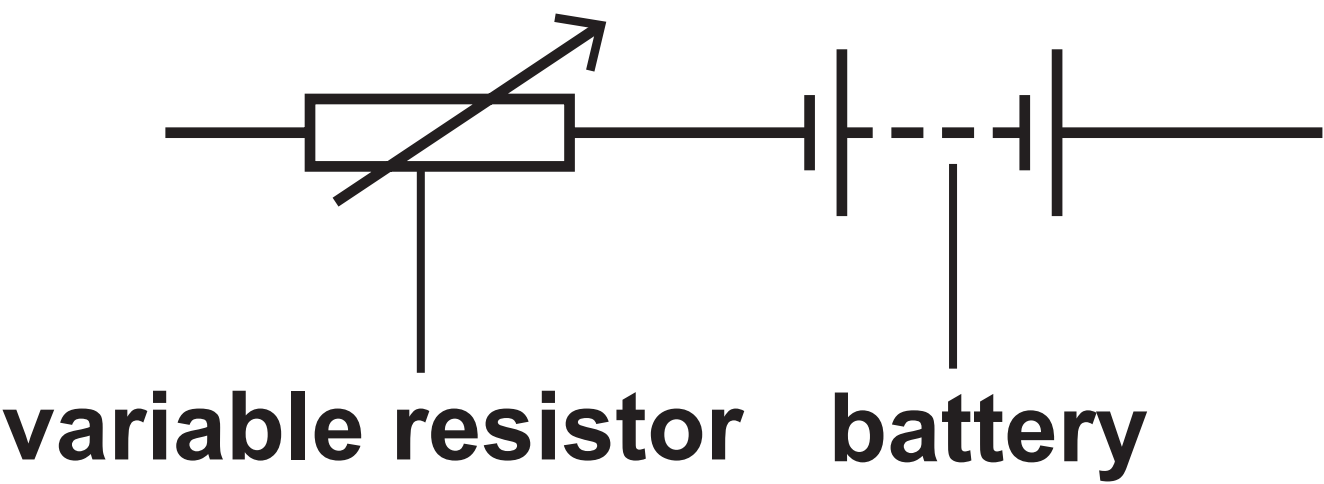
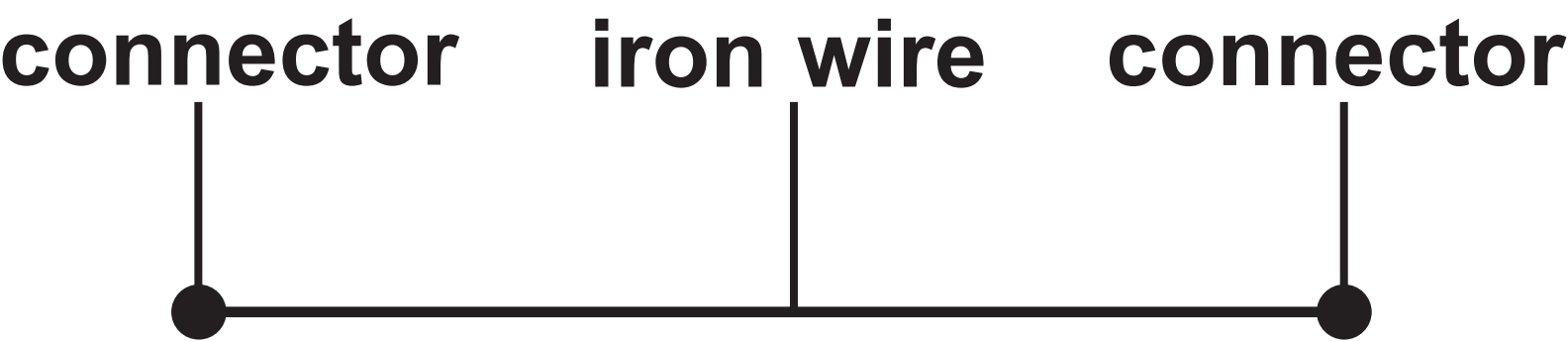


FIGURE 13

